

Lot 3002
Simmental Street
Block size: 501 m²

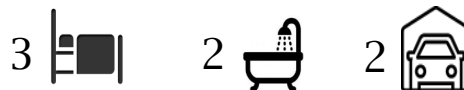
House & Land from
\$681,000

Artist's Impression



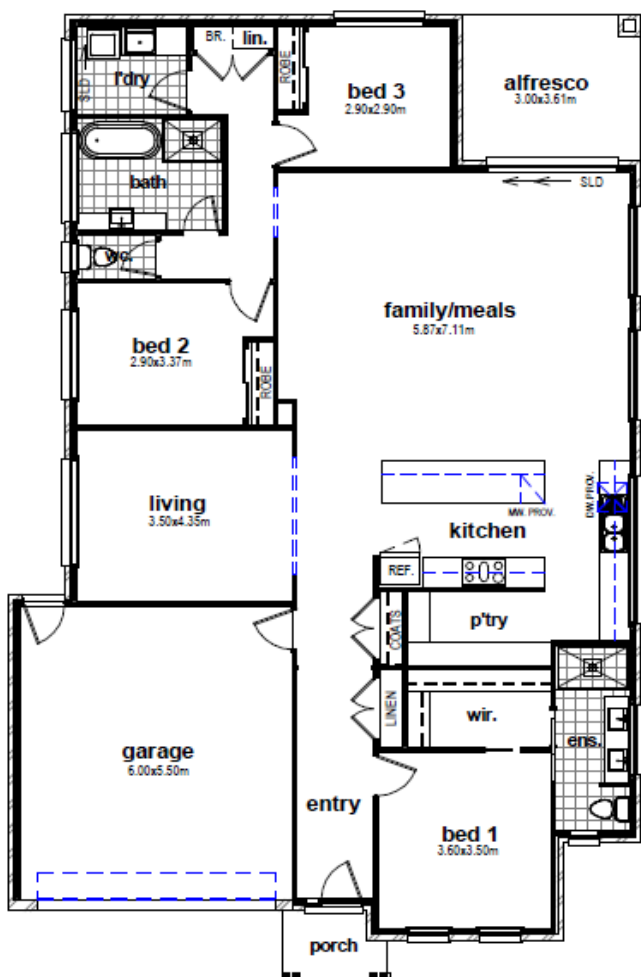
Malvern 223 Traditional

Total dwelling size: 223.61 m² - 24.07 sq



Package Includes:

- 7 Star energy rating
- Quality bricks from builder's range
- Quality floor coverings throughout
- Ceramic floor tiles to all wet areas.
- Colorbond sectional Garage Door with remote control
- Site cost allowance included
Conditions apply



For package enquiries
Ph: (03) 59 414 944
sales@cheviothomes.com.au
www.cheviothomes.com.au

Sales representatives

Joanne Clapton: 0450 616 313
joclapton@cheviothomes.com.au

Shammi Bhardwaj: 0406 195 313
shammibhardwaj@cheviothomes.com.au

DISCLAIMER: Cheviot Homes Pty Ltd reserves the right to alter inclusions as part of ongoing product development without written notice. Government building guide lines may apply. Site specific building controls and or conditions may vary standard inclusions to satisfy foundation designs, 7 star energy requirements and BAL ratings. All package pricing is dependent upon current land availability and specific site costs that may apply to each individual allotment. Unless specified, all house and land packages do not include government stamp duty and or associated legal costs. All package prices quoted are based on standard inclusions and do not include any current promotions and/or additional options that may be available or offered at our display centre. All Artist impressions are for illustration only and may differ from standard plans.