

HOUSE & LAND PACKAGE

\$723,107



Live your dream



MERRIVALE 25

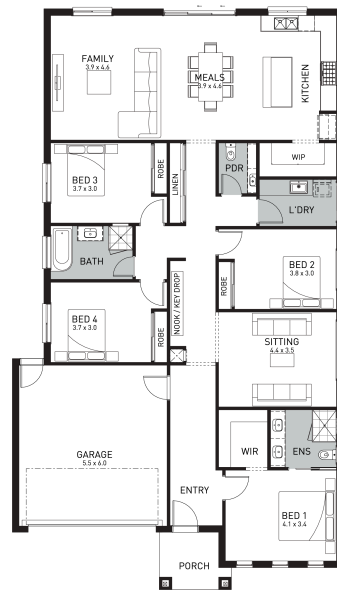
Newport Facade

4 2 2 2 25.27sq 640m²

Lot 3007 Simmental Street, Drouin - Ferntree Ridge

Inclusions

- Vista inclusions + Everyday Living pack
- 7 Star Energy Rating + Solar PV System
- Fixed Price Site Costs, Developer + Council Requirements
- Alarm, CCTV System + Video Doorbell
- Double Glazed Windows
- 2550mm High Ceilings Throughout
- (20) LED Downlights + (10) Roller Blinds
- 900mm Kitchen Appliances including Dishwasher
- Quality Floor Coverings Throughout
- 35m² Coloured Concrete Driveway
- Clothesline



Sean Green

E Sean.Green@orbithomes.com.au

M 0436 112 061

ORBIT HOMES AUSTRALIA PTY LTD - CDB-U 50505.

DISCLAIMER: Facade Illustrations are used as a guide only, excludes upgrades such as but not limited to feature stone and tiles, Refer to façade guide for standard Inclusions. Images used are for visual purposes only. Upgraded fixtures, fittings and design items may be shown, these can be selected at additional costs, please refer to a Sales Consultant for further information or to upgrades book for optional extras. Customer connection fees to power and telephone not Included Not to be used with any other offer. Progress payments on construction. Excludes stamp duty and costs. *Our 100% Fixed Price Guarantee covers all majority of the building requirements however some items need to be assessed further. The following items are excluded however these items will be checked and assessed prior to Sales Accept; Additional screw piles to the slab design where fill on block exceeds 1 meter; Acoustic requirements where a (DDO) Noise Attenuation is applicable; Build over easement application charges - subject to authority & final siting plan; Sewer tie cutback charges - subject to authority & final siting plan. The house and land package total price may include developer incentives & rebates available at the time of issue. Developer Incentives & rebates may be withdrawn at any time to the discretion of the land developer. For full conditions, visit our website or speak with your New Homes Sales Professional.

Land price: \$352,000. Date created 23/05/2026. Valid for 60 days.

