

# ROSELEIGH HOMES



## House & Land Package

# \$1,420,000\*

**Lot 422 Pinehurst Street, Drouin - 2034m<sup>2</sup>**

Fairways Estate

**Adah- 36.92sq Total Area**

- 2.7m ceiling height throughout, with feature 4.20m high vaulted ceilings to Rumpus, Kitchen, Meals and Living areas
- Feature silvertop ash shiplap cladding and render finish to exterior facade
- Study and Mud room both with built in joinery
- Feature arch window to Rumpus Room
- Raked highlight window to living space letting in a wealth of natural light
- Separate powder room
- Stacking sliding door to meals area
- Freestanding bath to bathroom
- Double glazed windows throughout
- 3.8kw of solar power



Contact Riley- [riley@roseleighhomes.com.au](mailto:riley@roseleighhomes.com.au)

0456 881 899

**Built for you.**

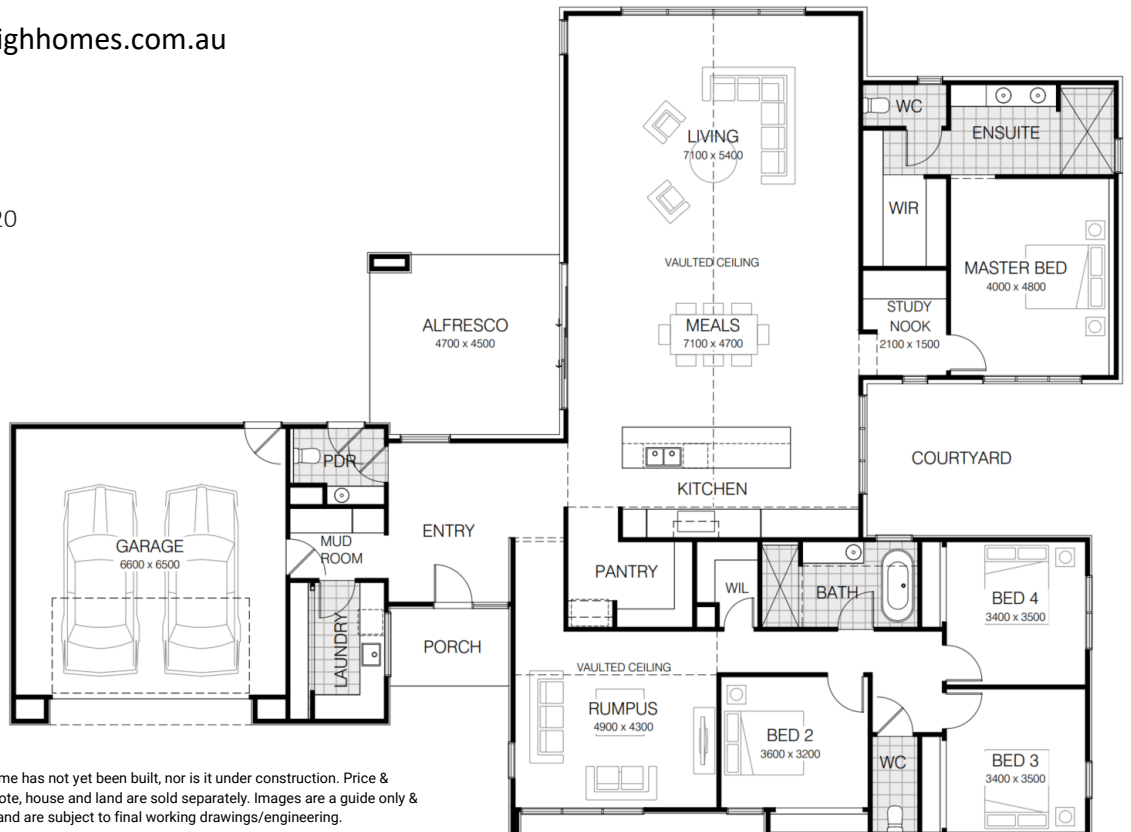
03 5622 6777

[roseleighhomes.com.au](http://roseleighhomes.com.au)

12 Hazel Drive, Warragul, VIC 3820

@roseleigh\_homes

roseleighhomes



\*Please note this is a house and land package and the home has not yet been built, nor is it under construction. Price & availability are subject to change without notice. Please note, house and land are sold separately. Images are a guide only & subject any developer approval. Site costs are estimates and are subject to final working drawings/engineering.

CDB-U 52517