



Botanica Estate
Mountain Ash Drive, Korumburra
Lot 211

Facade: Siena

House: 19.8 sq

Land: 1248 m2

3 2 1 2

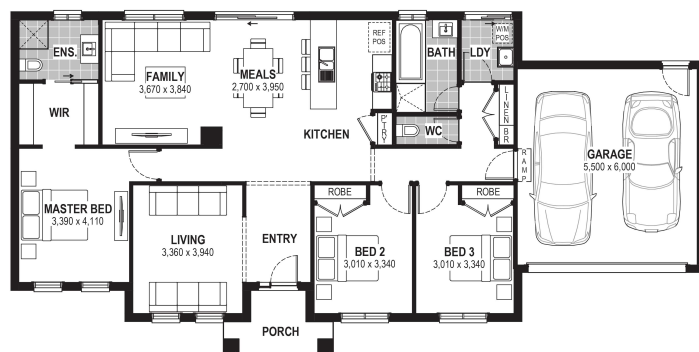
Forest 20

Inclusions

- Truecore Steel House Frame
- Colorbond Steel Roof (with Sarking)
- High Performance (uPVC) Double Glazed Safety Glass Windows & Doors
- 7 Star Energy Efficient to all orientations
- 7 x 440w Panels & 3KW Inverter (single phase)
- Bushfire Compliance to BAL 12.5
- 50 Year Structural Guarantee
- Range of stylish colour schemes
- Overhead Cabinetry to Kitchen
- Tiled Shower Bases
- Laundry Cabinetry
- Remote Garage Door with Openers
- Titled Land
- Site Costs Allowance Included
- Laminate Flooring & Carpet Throughout
- Fibre Provisioning
- Downlight Allowance
- Blockout Roller Blinds
- 900mm Appliances

Contact:

Jessica Finlay
0428 042 264
houseandland@jgking.com.au



BOTANICA
KORUMBURRA