

HOUSE & LAND PACKAGE

SJDhomes

Building **more** than homes



\$1,212,000

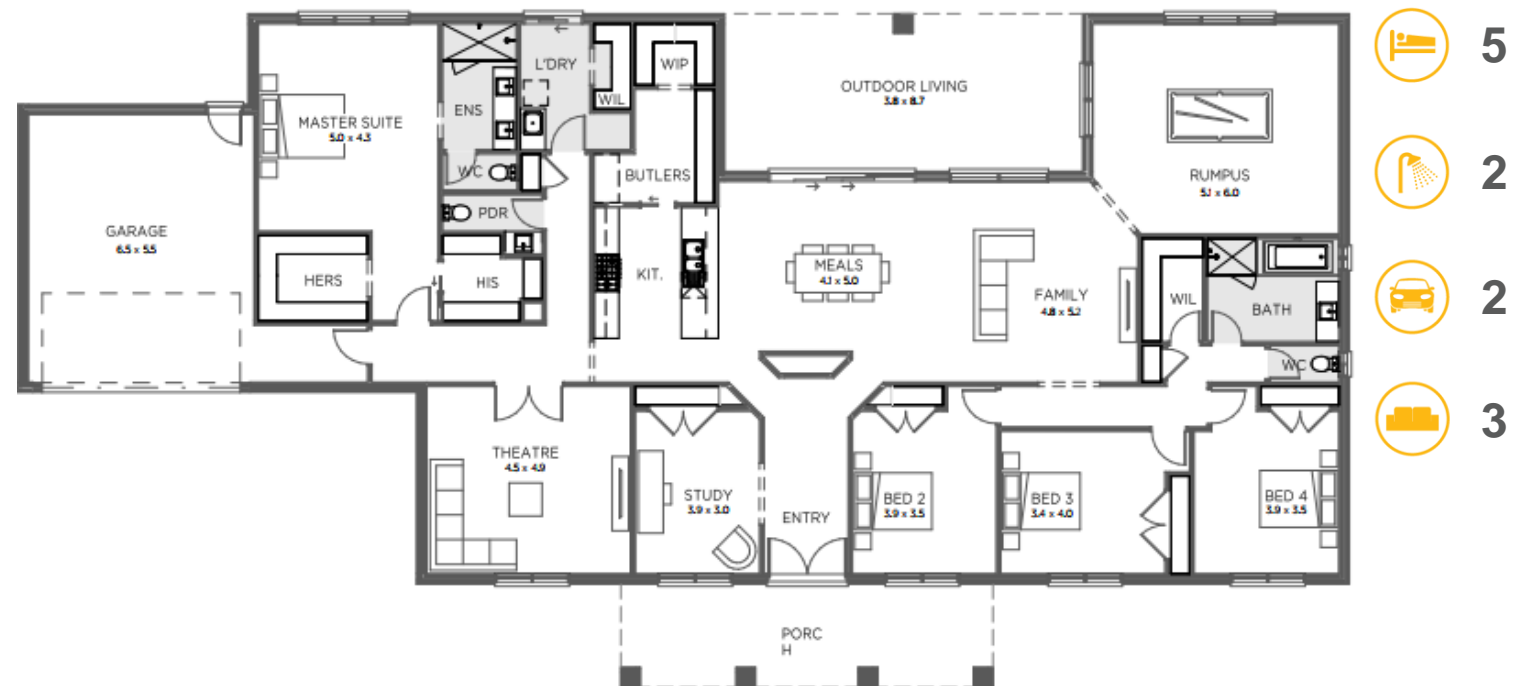
FAIRWAYS ESTATE

Lot 429 Royal Pines Drive, Drouin

House: 44.5q | Land: 2041m² | Frontage: 37.8m

Rutherford 445 – Signature Range

- Façade as shown – others available
 - 2740mm ceilings & Colorbond roof
 - 40mm stone to kitchen & 20mm to bathrooms
 - Fisher & Paykel appliances and pot drawers
 - Double glazed awning windows & sliding doors
 - 3.5kw solar system & Site Cost Allowance
- Plus So Much More!



Build with confidence with HIA's Professional Major Builder 2024

Not the package for you – contact me to discuss your needs including customising our homes

Signature
RANGE

Mark Battersby Building Consultant
M: 0452 619 581 E: markb@sjdhomes.com.au

*Some images are for illustration purposes only and may contain items not included in all SJD products. The prices are based on each house as standard and not as displayed. SJD Homes reserves the right to alter prices or the terms without notice. For more information visit: www.sjdhomes.com.au