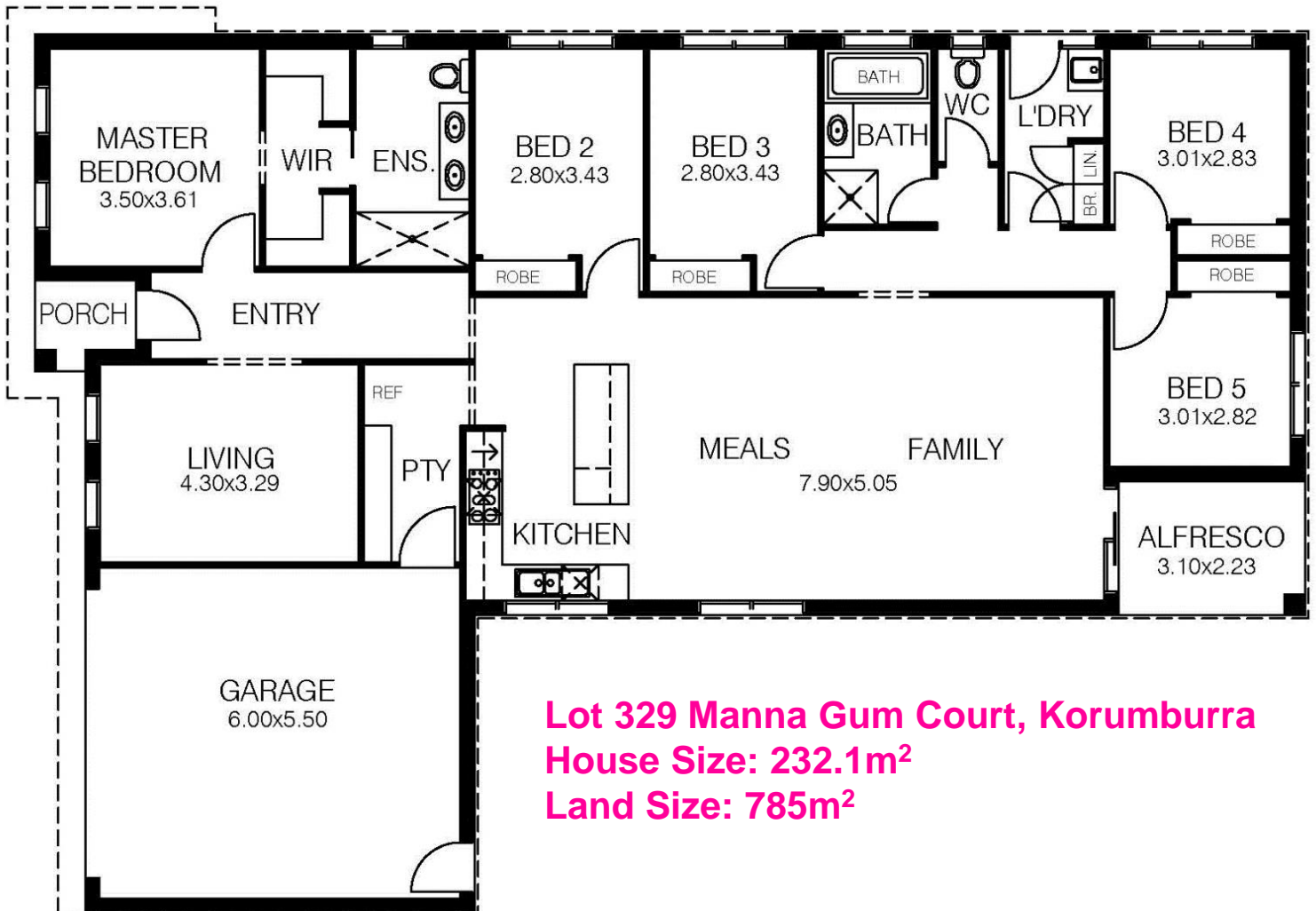


# House and Land Package \$622,900

Bedroom 5 | Bathroom 2 | Garage 2



# Broadford

22-25 Squares including Double Garage with Panel Lift Door  
4 or 5 Bedroom Designs, 2 Bathrooms

## INCLUSIONS:

- Stainless Steel 900mm Underbench Oven
- Stainless Steel 900mm Gas Hotplates
- 900mm Curved Glass Canopy Rangehood
- Ducted Heating to 7 Points (8 Design Specific)
- Instantaneous Hot-Water Unit
- Grey-Water connection to Toilet & Laundry where available
- Dishwasher & Microwave Space
- Melamine Kitchen and Vanities
- 20mm Stone Benchtops
- Custom Made Breakfast Bar
- Overhead Cupboards
- Walk in Pantry with Melamine Shelving
- Square Mixer taps Throughout
- White Bathroom and Ensuite products
- 1900 x 900 Tiled Showerbase to Ens with Niche
- 900 x 900 Tiled Showerbase to Bathroom
- Modern Square Vanity Basins
- Mirrors in Bathroom and Ensuite
- Clear and Pivot Shower screens
- Exhaust fans to Bathroom and Ensuite
- Double Walk in Robes to Master Bedroom
- Built in Robes to Balance of Bedrooms
- Spacious Linen/Broom cupboard
- Corinthian PMAD 104 820mm Front Door
- Flush Internal doors
- Chrome Door Furniture
- Painted Skirts and Architrave
- 10 x LED Downlights Included, Bayonet socket Batten lights to balance of home (globes not supplied)
- Floor Tiles to Entry, Hallways, Kitchen, Pantry, Meals, Family & Wet Areas
- Carpet from Builders Range
- Locking aluminum windows throughout
- Tiled Roof
- Colorbond Fascia and gutter
- Render to Piers, Master & Garage Front
- Alfresco with concrete flooring
- All Plans, Specifications & Soil Report
- Engineer Class M Slab, engineered edge beams at 200mm
- Fall Allowance 300mm
- Gas and Electrical underground works only
- Sewer up to 45 meters
- Storm water up to 60 meters
- Concrete pump and temporary fencing as required
- Circuit Breaker and Smoke Detector
- Garden Taps Front and Rear
- Termite Protection
- Solid Pine Frame
- Insulation as per 7 star energy rating report
- 3.5kw Solar Power
- Three Month Defect Period
- Ten Year Structural Guarantee
- Double garage with automated with front Panel Door

**BATT PACK INCLUDED**  
**TICKLED-PINK PACK INCLUDED**  
**KNOCKOUT PACK INCLUDED**

\*Excludes Bushfire Protection Upgrade



Price valid until 30<sup>th</sup> April 2025

Email: [reception@frenkenhomes.com.au](mailto:reception@frenkenhomes.com.au)  
Website: [www.frenkenhomes.com.au](http://www.frenkenhomes.com.au)

ABN 39 121 265 898  
CDB - U 54221