



**Botanica Estate**  
Manna Gum Court, Korumburra  
Lot 332

**Facade:** Oasis

**House:** 32.23 sq **Land:** 1345 m2

4 2 4 2

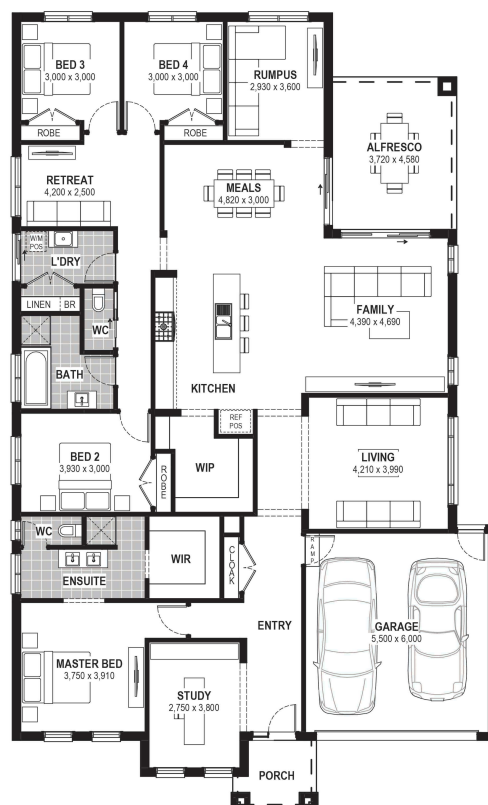
## Delta 32

### Inclusions

- Bluescope Steel House Frame
- Colorbond Roof with Sarking
- 7 Star Energy Efficient
- European-styled (uPVC) Double Glazed Windows & Doors
- 900mm Rangehood & Upright Cooker
- Overhead Cupboards to Kitchen
- Professional Colour Consultation
- Tiled Shower Bases
- Window Locks to all Openable Windows
- Remote Garage Door with Openers
- Bushfire Compliance up to BAL 12.5
- 50 Year Structural Guarantee
- 2550mm Ceiling Height
- Brick Infill Above Garage Door
- Caesarstone Benchtops to Kitchen & Vanities
- Fibre Provisioning
- Laminate Flooring & Carpet Throughout
- Site Costs Allowance Included
- Your Era, Your Way Promotion ALPHA
- Concrete Driveway up to 35qm

### Contact:

Joseph Shea  
0437 206 771  
houseandland@jgking.com.au



\*Conditions apply. Speak to your New Home Advisor for further details