



# MALVERN 23A

KOBE

 4
  2
  2
  441sqm
  206sqm

**Lot 529 Ruffels Street  
DROUIN  
(The Fairways Estate)**

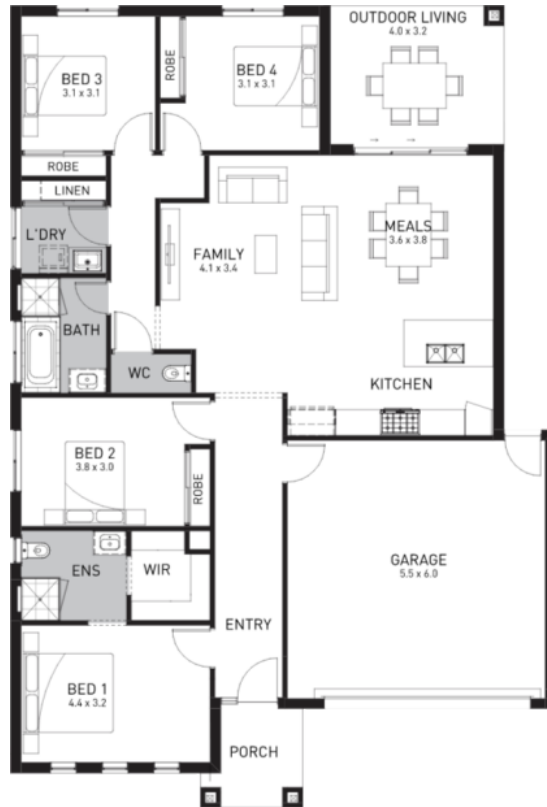
## FIXED PRICE H&L PACKAGE

**\$664,413**

**Single Storey Inclusions**

- 12-month maintenance period
- Fixed Price Site Costs, Developer & Council Requirements
- Double Glazed Windows & Doors
- 2550mm High Ceilings Throughout
- Downlights Throughout
- Quality Floor Coverings throughout
- Concrete Driveway & Porch (to. 35sqm)
- SMEG 900mm appliances & Dishwasher
- Solar PV System

Garage	37.30sqm
Porch	4.79sqm
<b>Total Area</b>	<b>22 sq (206sqm)</b>



**Joanne Clapton**  
joanne.clapton@orbithomes.com.au  
0450 616 313

Orbit Homes Australia Pty Ltd " CDB-U 50505 " Orbit Homes Queensland Pty Ltd QBSA LIC 716019 " Facade illustrations serve as a guide only, excluding upgrades like feature stone & tiles. Refer to façade guide for inclusions. Images for visual purposes; upgraded fixtures & fittings may incur additional costs. Contact sales Consultant for details. Customer responsible for fencing and landscaping post-handover. Excludes power & telephone connection fees. Prices subject to change; not combinable with other offers. Progress payments during construction. Excludes stamp duty & costs. House & land package price may include developer incentives, rebates, and builder referral fees, subject to change at the discretion of the land developer.