



**LOT 514 CART DRIVE DROUIN | THE FAIRWAYS ESTATE** **\$680,000**  
Land: 553m<sup>2</sup> | Frontage: 14m | **TITLED**  
House: 23.2 Squares

## HOTHAM 232 EVOLUTION RANGE

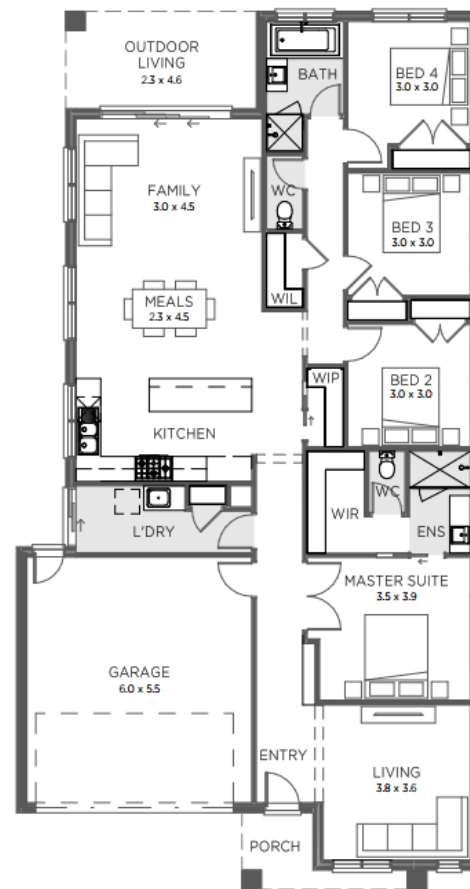
- Façade as shown – others available
- 900mm stainless steel upright oven
- 900mm stainless canopy rangehood
- Quality flooring throughout
- Gas ducted heating
- Energy efficient heat pump HWS
- Colorbond panel lift garage door
- Developer requirements
- Colour Appointment with Interior Designer
- Allowance for site costs
- Includes First Home Buyers Grant\*
- And much more!

**Perfect for young families and investors – option to add FULL TURNKEY package**

**Amazing package In the much sought after Fairways Estate – Be quick!**

**Not the package for you...contact me today to discuss other House & Land Packages to suit your needs.**

**Contact me for a full list of inclusions and optional promotions.**



4



2



2



2