



LOT 502 CART DRIVE, DROUIN | THE FAIRWAYS ESTATE **\$601,700**
 Land: 435m² | Frontage: 15m | **TITLED**
 House: 20.0 Squares

HOTHAM 200
EVOLUTION RANGE

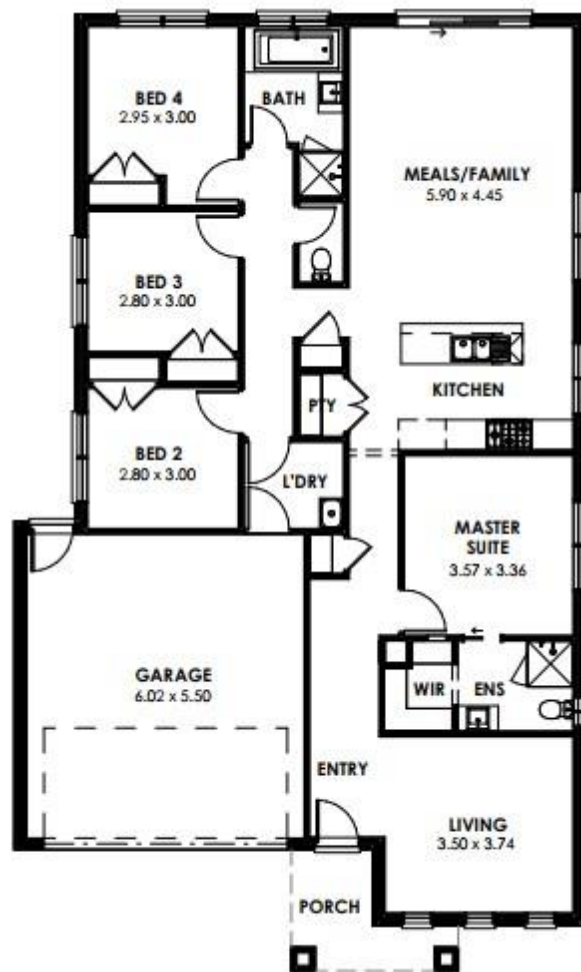
- Façade as shown – others available
- 900mm stainless steel upright oven
- 900mm stainless canopy rangehood
- Quality flooring throughout
- Gas ducted heating
- Energy efficient heat pump HWS
- Colorbond panel lift garage door
- Developer requirements
- Colour Appointment with Interior Designer
- Allowance for site costs
- Includes First Home Buyers Grant*
- And much more!

Perfect for young families and investors – option to add FULL TURNKEY package

Amazing package In the much sought after Fairways Estate – Be quick!

Not the package for you...contact me today to discuss other House & Land Packages to suit your needs.

Contact me for a full list of inclusions and optional promotions.



-  **4**
-  **2**
-  **2**
-  **2**

*Some images are for illustration purposes only and may not include items in all SJD products. The prices are based on each house as standard and not as displayed. Plan may need to be adjusted to suit block requirements. Unless specified as a fixed price, additional costs may be incurred due to undetermined site conditions based on the results of a site survey and soil test. SJD reserves the right to alter prices or the terms without notice. Unless specified above, price does not include BAL Rating or First Home Owners Grant. Land was available at the time of advertising. For more information visit sjdhomes.com.au.