



Ferntree Ridge Estate

Lot 722 Coconut Street Drouin

House: 25.1 Sq | Land: 800m² | Frontage: 20m

\$541,900

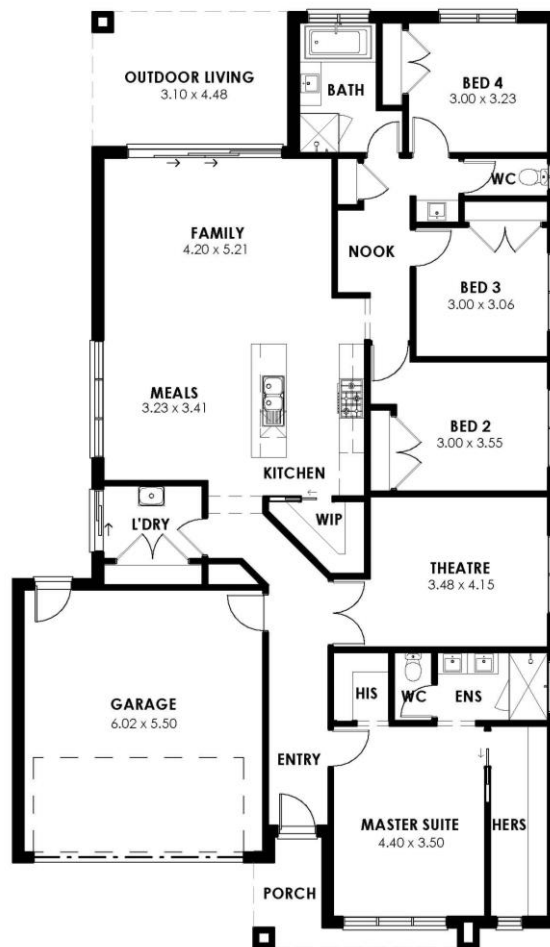
CAVERSHAM 251

SJD INCLUDED RANGE

Featuring a luxurious master suite plus 3 other bedrooms, theatre room, study nook and a spacious kitchen overlooking meals, dining, family and alfresco.

- Raised porch with render
- Steel lintels and brickwork over all façade doors and windows
- 20mm stone to kitchen island
- 2590mm ceiling height
- Window locks and flyscreens
- Colorbond panel lift garage door with remote
- 900mm appliances
- 1 bank of 3 pot drawers to kitchen
- Tiled shower bases
- Shower rails, towel rails and toilet roll holders
- Quality floor coverings throughout
- Huge choice of taps, basins, flooring, bricks and more to choose from
- Site cost allowance (pending soil test, survey and engineering)
- NBN package

Call today for a free information pack and find out about our amazing promotions or ask about other floor plans to suit this block.



4



2



2



2