



Samira Estate
 Lot 119 Gaslight Street, Longwarry
 House: 24Sq | Land: 508m² | Frontage: 14.50m

\$467,400*

LOXTON MK3 EVOLUTION RANGE

Featuring a luxurious master suite plus 3 other bedrooms, extra living room and a spacious kitchen overlooking meals, dining, family and alfresco.

This package is based on our Evolution Range of inclusions:

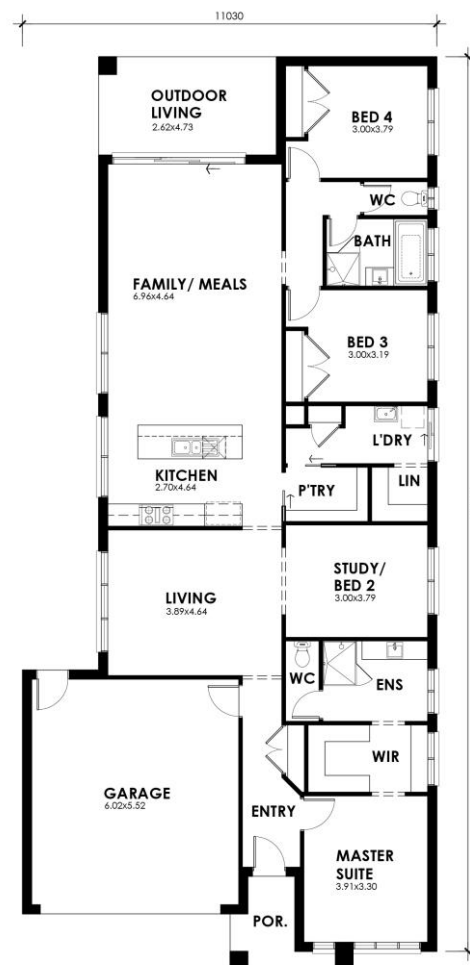
- 900mm upright oven
- Tiled or glass splashback
- Choice of tiles or timber laminate flooring to entry, front hallway, kitchen and meals
- Quality carpet to remaining areas
- Window locks
- Gas ducted heating

Ask us about our Boost Promotion for an extra \$4,990 (limited time only):

- Evaporative cooling OR double glazed awning windows
- Colorbond roof
- Rendered piers or 450mm eaves to façade
- 2590mm ceilings
- 20mm stone benchtop to kitchen
- 2 x shower niches

*Price includes Regional First Home Owners Grant.
 Price without grant is \$487,400

Call today to discuss our House & Land packages!



4



2



2



2

*Some images are for illustration purposes only and may not include items in all SJD products. The prices are based on each house as standard and not as displayed. Plan may need to be adjusted to suit block requirements. Unless specified as a fixed price, additional costs may be incurred due to undetermined site conditions based on the results of a site survey and soil test. SJD reserves the right to alter prices or the terms without notice. Unless specified above, price does not include BAL Rating or First Home Owners Grant. Land was available at the time of advertising. For more information visit sjdhomes.com.au.