



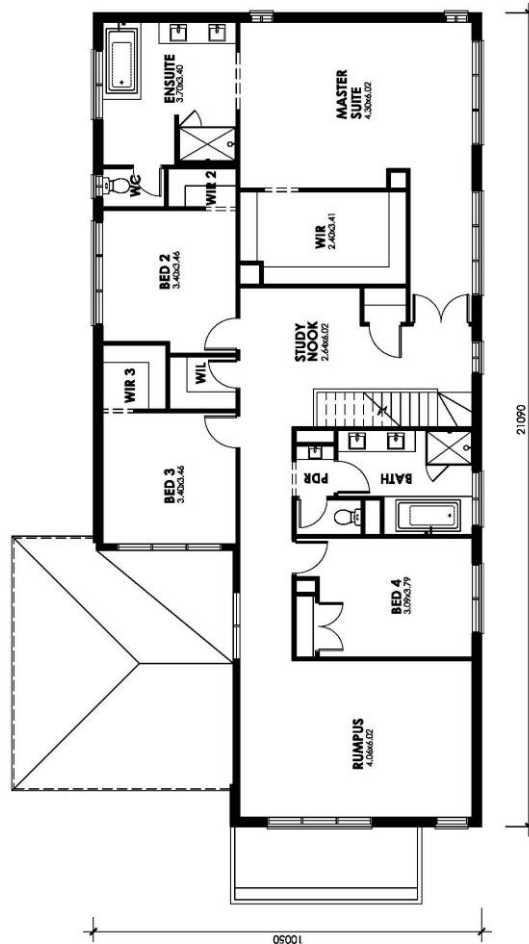
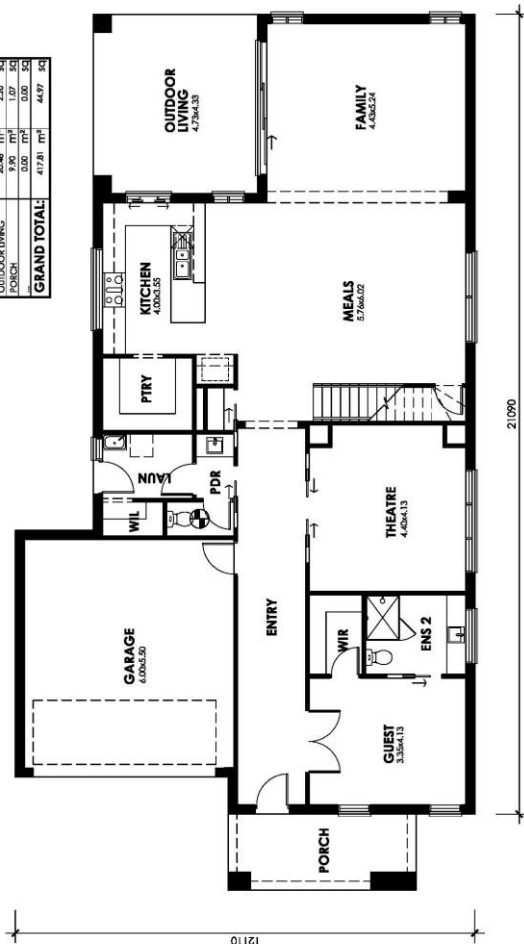
GRANDE 449
SJD INCLUDED RANGE

- Raised porch with render*
- Steel lintels and brickwork to façade
- 2590mm ceiling height
- Window locks and flyscreens
- Colorbond panel lift garage door with remote
- 900mm appliances
- Tiled shower bases
- Shower rails, towel rails and toilet roll holders
- Quality floor coverings throughout
- Site cost allowance
- NBN package
- Allowance for Developer requirements

Fairways Estate
 Lot 105 Kingston Heath Drive, Drouin
 House: 44.9 Sq | Land: 2002m2

\$854,750

AREAS TABLE	
GROUND FLOOR	17.75 SQ
FIRST FLOOR	21.00 SQ
LANDSCAPE	0.00 SQ
SUB TOTAL:	38.75 SQ
GARAGE	36.51 SQ
OUTDOOR LIVING	20.48 SQ
PORCH	8.90 SQ
GRAND TOTAL:	417.91 SQ



5



3



2



3

*Some images are for illustration purposes only and may not include items in all SJD products. The prices are based on each house as standard and not as displayed. Plan may need to be adjusted to suit block requirements. Unless specified as a fixed price, additional costs may be incurred due to undetermined site conditions based on the results of a site survey and soil test. SJD reserves the right to alter prices or the terms without notice. Unless specified above, price does not include BAL Rating or First Home Owners Grant. Land was available at the time of advertising. For more information visit sjdhomes.com.au.