



## THE FAIRWAYS ESTATE

Lot 102 Kingston Heath Drive Drouin

House: 44.52 Sq | Land: 2002m2 | Frontage: 55.81m

# \$799,990

### RUTHERFORD MK2 SJD INCLUDED RANGE

Build the dream home you always wanted on an idyllic half acre block.

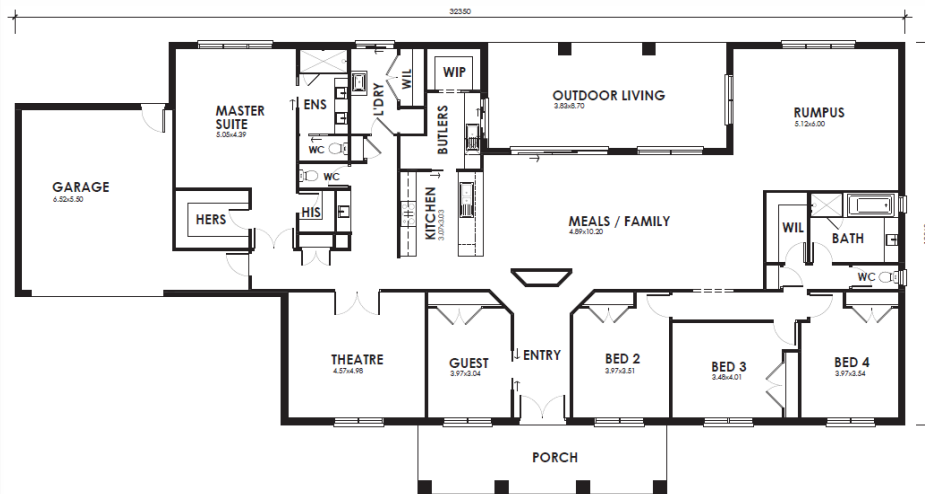
The Rutherford combines the benefits of modern living with ranch style comfort.

This flexible design has something for everyone with a stunning open plan kitchen, family, meals area leading on to a large alfresco, spacious rumpus, separate theatre and five bedrooms, perfect for large families or space for guests. A pantry to envy and a workbench area in the garage.

This package is based on our **Included Range** inclusions:

- Raised porch with render\*
- Brickwork over all façade doors and windows
- 2590mm ceiling height
- Window locks and flyscreens
- Colorbond panel lift garage door with remote
- 900mm appliances
- Tiled shower bases
- Shower rails, towel rails and toilet roll holders
- Quality floor coverings throughout
- Site cost allowance
- NBN package
- Allowance for developer requirements

Contact me today to discuss this amazing opportunity and share your own vision with a customised design or view other floorplan options on this block.



#### AREAS TABLE

GROUND FLOOR	312.93	m <sup>2</sup>	33.66	SQ
<b>SUB TOTAL:</b>	312.93	m <sup>2</sup>	33.66	SQ
GARAGE	44.70	m <sup>2</sup>	4.81	SQ
OUTDOOR LIVING	33.32	m <sup>2</sup>	3.59	SQ
PORCH	22.60	m <sup>2</sup>	2.43	SQ
<b>GRAND TOTAL:</b>	413.55	m <sup>2</sup>	44.52	SQ

### RUTHERFORD MK2



5



2



2



3