

# THE CAVERSHAM 251 HOUSE + LAND PACKAGE



\*Façade for illustrative purposes only

## Lot 509 Cinnamon Street, Drouin Ferntree Ridge Estate

House: 25.1Sq Land: 512m<sup>2</sup> Frontage: 16m

# \$436,400\*

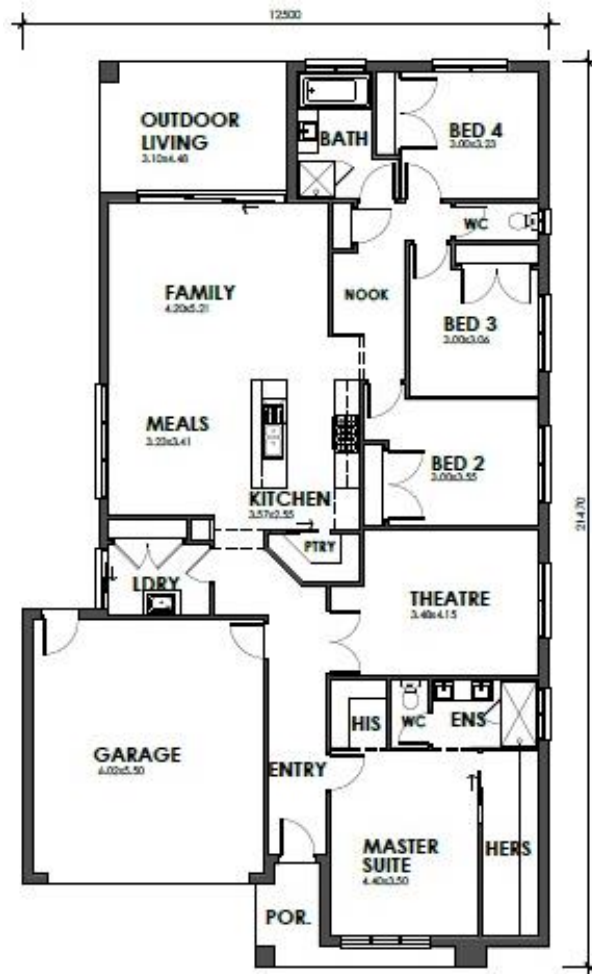
The Caversham 251 boasts a modern and sophisticated design, featuring a luxurious master suite plus 3 other bedrooms, theatre room, study nook and a spacious kitchen, walk in pantry, meals, family and alfresco areas.

This package is based on our **Included range inclusions** such as:

- Raised porch with render\*
- Steel lintels and brickwork over all façade doors and windows
- 2590mm ceiling height
- Window locks and flyscreens
- Colorbond panel lift garage door with remote
- 900mm appliances
- 1 bank of 3 pot drawers to kitchen
- Tiled shower bases
- Shower rails, towel rails and toilet roll holders
- Quality floor coverings throughout
- Site cost allowance (pending soil test, survey and engineering)
- NBN package
- Developer requirements

Contact us to view other floorplan options on this block.

\*House & Land Package Price: \$436,400 (including regional first home buyers grant, conditions apply if eligible).  
Price without first home buyers grant = \$456,400



4



2



2



2

# SJDhomes

Colette Battersby | Sales Consultant  
M. 0433 315 513  
E. colette@sjdhomes.com.au  
www.sjdhomes.com.au

Rosie Matthews | Sales Associate  
M. 0488 991 355  
E. rosie@sjdhomes.com.au  
www.sjdhomes.com.au