

THE GISBORNE 331 HOUSE + LAND PACKAGE



*Façade for illustrative purposes only

Lot 428 Cyathea Street, Drouin Ferntree Ridge Estate

House: 33.1Sq Land: 576m2 Frontage: 18m

\$497,400*

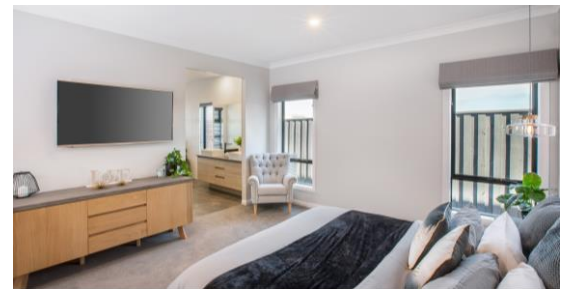
If space is what you are looking for then the Gisborne is for you. It boasts a large, centrally located family area which flows effortlessly from the spacious kitchen with walk in pantry, meals area and an outdoor alfresco. Featuring 4 bedrooms, 2 with a shared ensuite and a master suite tucked privately to the rear of the home with WIR and ensuite.

This package is based on our **Included range** inclusions such as:

- Raised porch with render*
- Steel lintels and brickwork over all façade doors and windows
- 2590mm ceiling height
- Window locks and flyscreens
- Colorbond panel lift garage door with remote
- 900mm appliances
- 1 bank of 3 pot drawers to kitchen
- Tiled shower bases
- Shower rails, towel rails and toilet roll holders
- Quality floor coverings throughout
- Site cost allowance (pending soil test, survey and engineering
- NBN package
- Developer requirements

Contact us to view other floorplan options on this block.

*House & Land Package Price: \$497,400 (including regional first home buyers grant). Price without first home buyers grant = \$517,400



SJDhomes

Colette Battersby | Sales Consultant

M. 0433 315 513

E. colette@sjdhomes.com.au

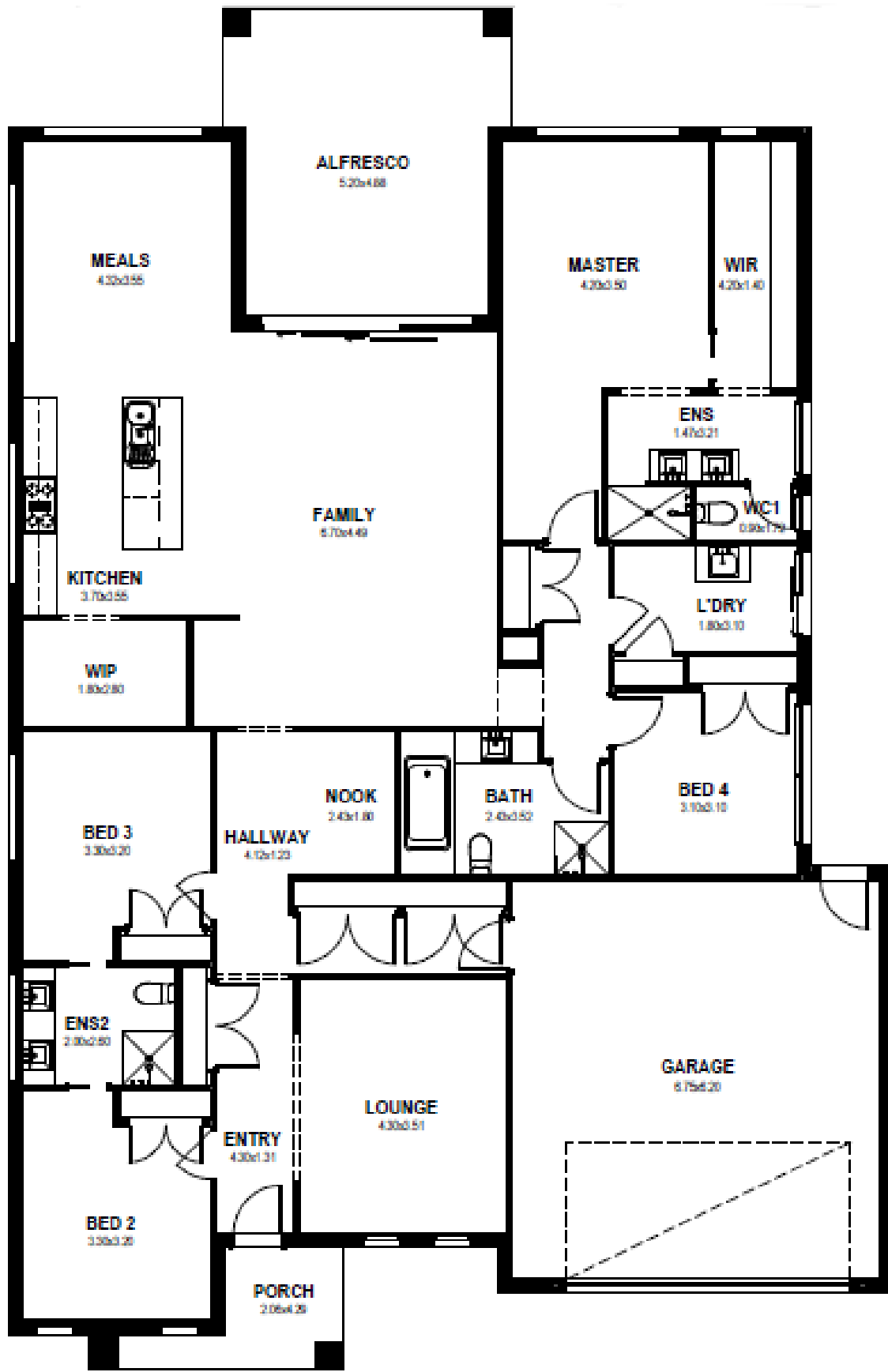
www.sjdhomes.com.au

Rosie Matthews | Sales Associate

M. 0488 991 355

E. rosie@sjdhomes.com.au

www.sjdhomes.com.au



4



3



2



2

SJDhomes

Colette Battersby | Sales Consultant

M. 0433 315 513

E. colette@sjdhomes.com.au

www.sjdhomes.com.au

Rosie Matthews | Sales Associate

M. 0488 991 355

E. rosie@sjdhomes.com.au

www.sjdhomes.com.au