

Images are for illustration purpose only.

# Home & Land

\*Images shown are for illustration purposes only. Facade details including entry door & window sizing may vary between house types. Pricing also excludes features such as fencing, landscaping, letterbox, decking & noticeable features of the facade. Please speak with your sales consultant for further detail.

Lot 513 Ferntree Ridge Estate, Drouin

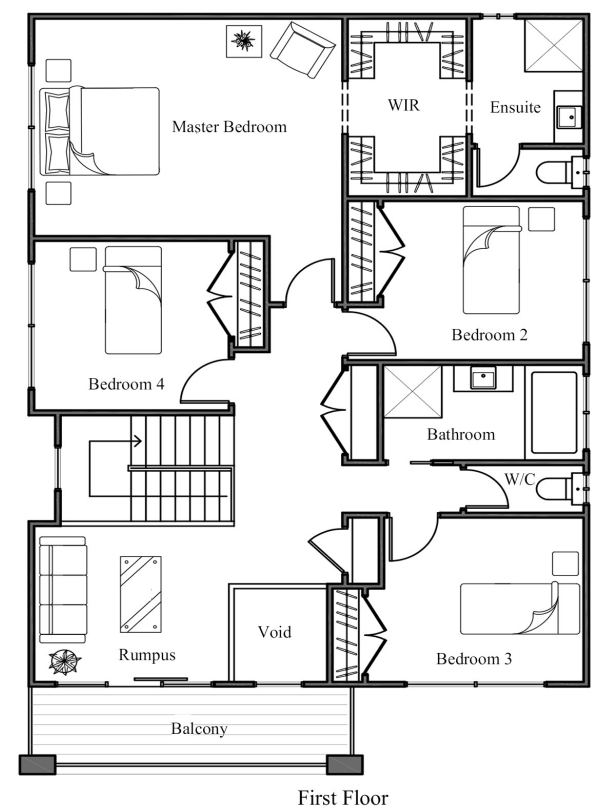
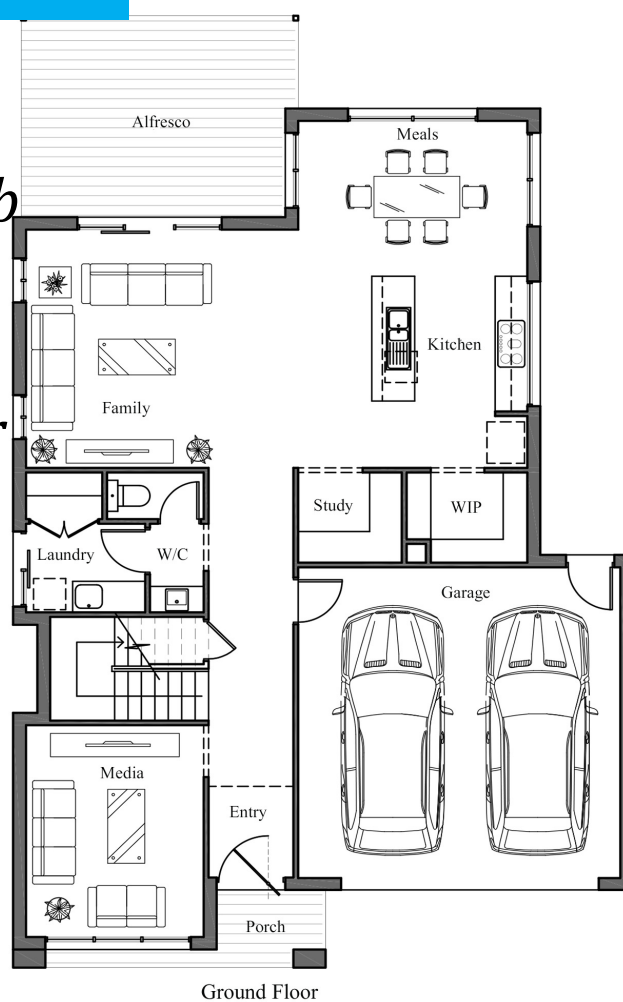
Sofia 330V

540m<sup>2</sup> 4  2  2  2 

# \$553,900

## Package Inclusions :

- Up to H1 concrete waffle pod slab
- Colourbond roof
- Stone Benchtop
- 900mm appliances & dishwasher
- Driveway
- Pot Drawers
- Wardrobe Joinery towers with drawers & shelves
- Tiled shower bases
- Eaves to front of home
- Quality flooring



For Enquiries Please Contact:  
Jessica Hine  
0407 244 625  
jhine@vartel.com.au

Visit Our Display Home  
Monday-Friday : 12-5  
Saturday - Sunday : 11-5  
20 King Parrot Boulevard, Drouin

Headoffice: 4 McQuade Street  
Morwell, VICTORIA  
5133 0301  
www.vartel.com.au

Price based on the facade type shown, any changes to this facade or the design may incur additional charges. Prices, inclusions, promotions and upgrades may be varied by Vartel Homes at any given time and without notice. House and land packages are subject to land availability. For specific details regarding this package please refer to a Vartel Homes Sales Consultant. Packages are subject to developer and council approval. Community infrastructure levy and asset protection permit are not included. Land price to be confirmed prior to purchase. Visit Vartel.com.au for full terms and conditions.\*Please refer to the house and land package inclusions and a Vartel sales consultant for exact site cost details.