



Built Smarter With Vartel

# HOUSE AND LAND

Images shown are for illustrative purposes only and may not represent the final product such as lighting, window furnishings, timber look garage door & timber windows. Façade details including entry door and window sizing may vary between house types. Pricing also excludes features such as fencing, landscaping, letterbox, decking, driveway and any notable features of the façade. Please speak with your sales consultant for further details. Images are used for illustration purpose only.

## LOT 11 Streeton Dve. Brandy Creek, Warragul

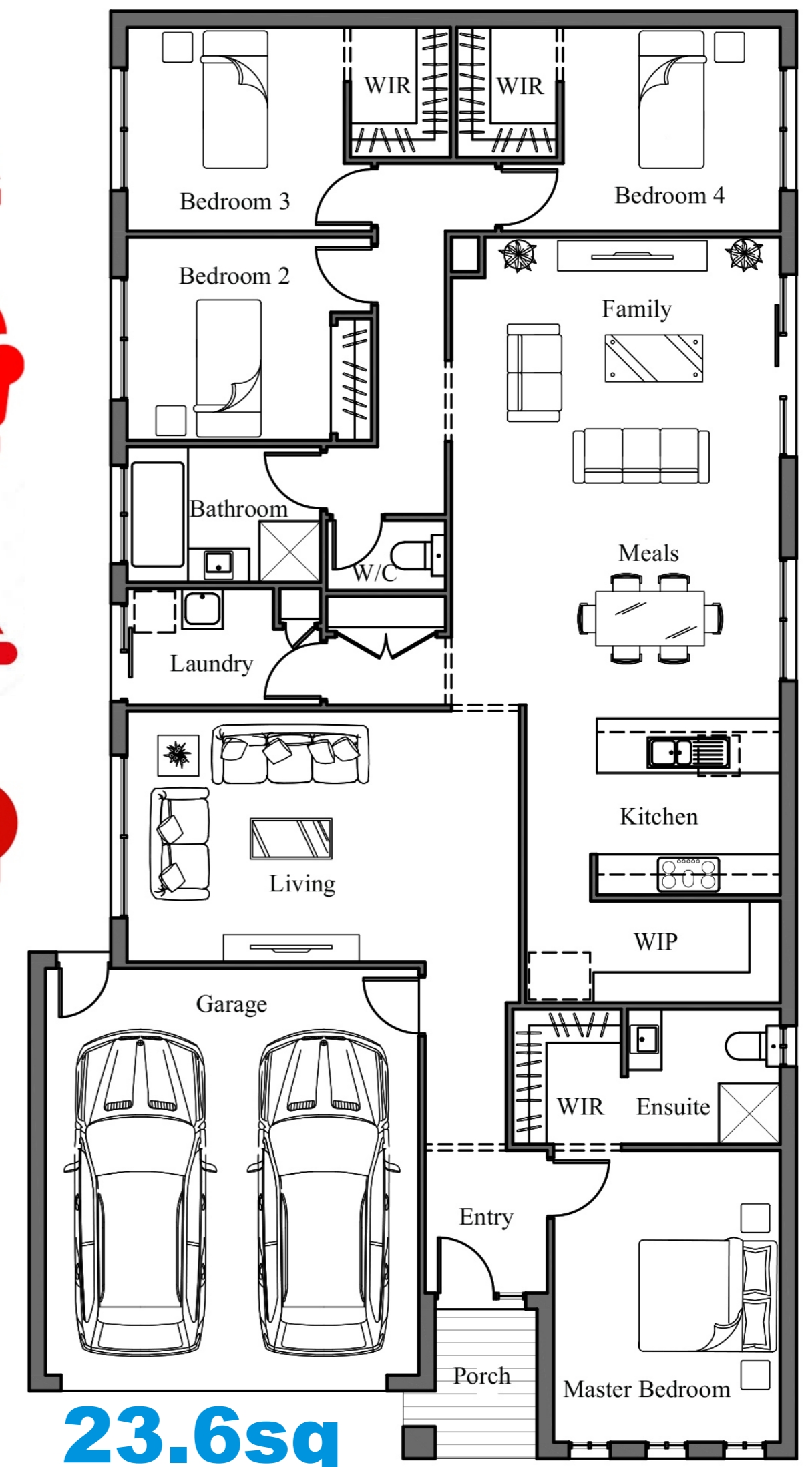
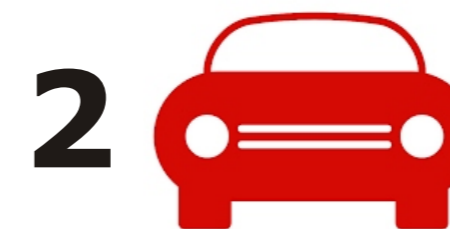
## FLOOR PLAN: CONCERTO 236V FACADE: V ESSENTIAL

### FROM\* \$400,700

### CREATE YOUR DREAM WITH VARTEL HOMES

#### V ESSENTIALS PACKAGE INCLUSIONS:

- ✓ STONE BENCH TOPS TO KITCHEN
- ✓ QUALITY FLOORING THROUGHOUT
- ✓ 450MM EAVES TO FACADE
- ✓ PANEL LIFT GARAGE DOOR WITH REMOTES
- ✓ SLIDING ALUMINIUM WINDOWS INCLUDING KEYED WINDOW LOCKS
- ✓ TECHNIKA STAINLESS STEEL APPLIANCES
- ✓ COLORBOND ROOFING
- ✓ PART A & B TERMITE PROTECTION



For enquiries please contact:  
**Evan Chiotelis**  
0407 244 625  
[www.vartel.com.au](http://www.vartel.com.au)

Gippsland Region  
**VICTORIA**  
03 5133 0301  
[evan@vartel.com.au](mailto:evan@vartel.com.au)

\*From pricing is based on standard plan and V Essential Inclusions, no site costs allowance. All packages are subject to Developer and Council approval. Package Price does not include stamp duty, government, legal or bank charges. Community Infrastructure Levy and Asset Protection Permit are not included in pricing and is to be arranged by the client directly with the Developer (if applicable). Any alterations may incur additional charges. Confirm land price and availability prior to purchase. Vartel reserves the right to withdraw or amend pricing, inclusions and promotion at any time without notice. \*Please refer to the terms and conditions at [www.vartel.com.au](http://www.vartel.com.au). Please speak with your sales consultant for further details. Pricing is current at 01/06/2019.