



HOME AND LAND

Images shown are for illustrative purposes only and may not represent the final product such as lighting, window furnishings, timber look garage door & timber windows. Façade details including entry door and window sizing may vary between house types. Pricing also excludes features such as fencing, landscaping, letterbox, decking, driveway and any notable features of the façade. Please speak with your sales consultant for further details.

LOT 17, AMBERLEY ESTATE, NARRE WARREN (300.05M2)

FLOOR PLAN: WHITEHAVEN 26_246
FACADE: MURRAY

FROM*
\$605,700

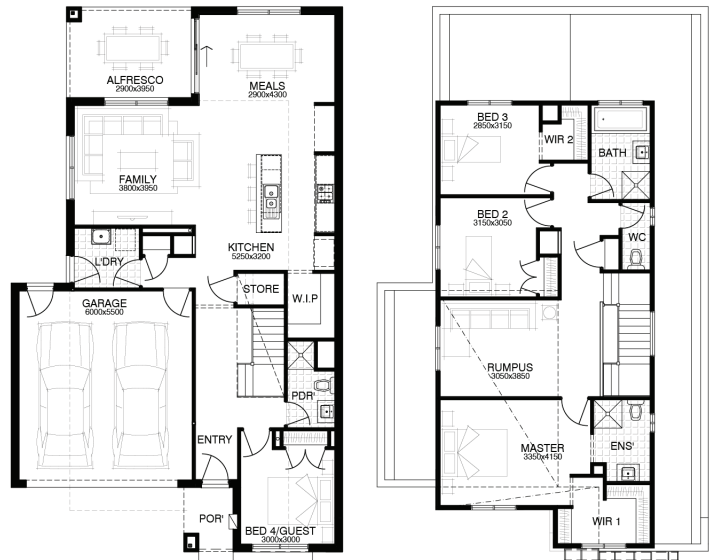
FIRST HOME OWNERS PRICE \$595,700

4 🚗 3 🍷 2 🚗 2 🛏️ 26sq 📏



PACKAGE INCLUSIONS:

- WELLNESS - DARWIN ESSENTIALS PACK
- DEVELOPER & COUNCIL REQS
- PART A & B TERMITE PROTECTION
- 3 COAT PAINT APPLICATION
- 450MM EAVES TO FACADE
- SECTIONAL LIFT GARAGE DOOR
- KEYED WINDOW LOCKS TO ALL OPENABLE WINDOWS
- 600MM STAINLESS STEEL APPLIANCES
- TILED SHOWER BASES
- INTERNAL & EXTERNAL PACKS AVAILABLE



For enquiries please contact:

John Tipene
0403 268 357
Simonds.com.au

Metro East

VIC
john.tipene@simonds.com.au