



FIXED
PRICE
PACKAGE



HOME AND LAND

Images shown are for illustrative purposes only and may not represent the final product such as lighting, window furnishings, timber look garage door & timber windows. Façade details including entry door and window sizing may vary between house types. Pricing also excludes features such as fencing, landscaping, letterbox, decking, driveway and any notable features of the façade. Please speak with your sales consultant for further details.

LOT 65, PARKLIFE ESTATE, TRARALGON (652M2)

FLOOR PLAN: BARAKEE 21_197
FACADE: BALLARINE

FIXED PRICE

\$359,422

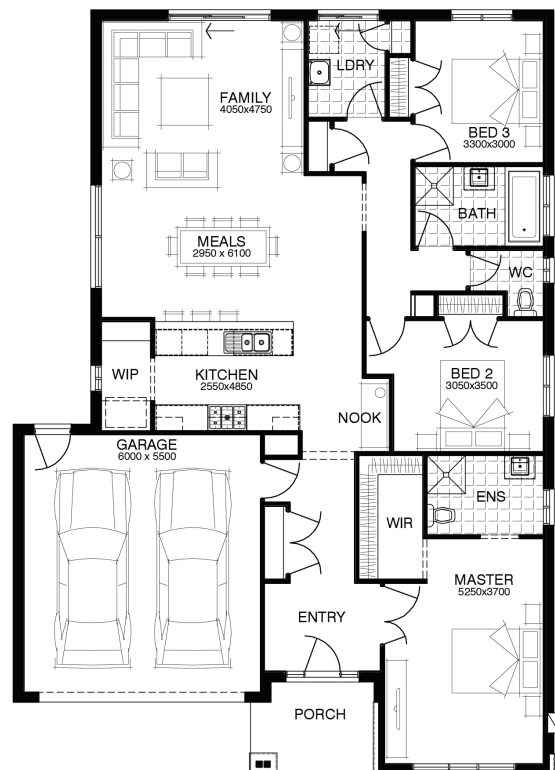
FIRST HOME OWNERS PRICE \$339,422

3 🚗 2 🍷 2 🚗 1 🏠 21sq 📏



PACKAGE INCLUSIONS:

- ▼ \$20,000 OF FREE UPGRADES
- ▼ DEVELOPER AND COUNCIL REQUIREMENTS
- ▼ PART A & B TERMITE PROTECTION
- ▼ 450MM EAVES TO FACADE
- ▼ SECTIONAL LIFT GARAGE DOOR
- ▼ SLIDING ALUMINIUM WINDOWS INCLUDING KEYED WINDOW LOCKS
- ▼ TECHNIKA 900MM STAINLESS STEEL APPLIANCES



For enquiries please contact:

Aaron Wilson
0413 713 082
Simonds.com.au

Central Gippsland

VIC
aaron.wilson@simonds.com.au

