



HOUSE & LAND

\$526,600*

HERITAGE BAY ESTATE – CORINELLA

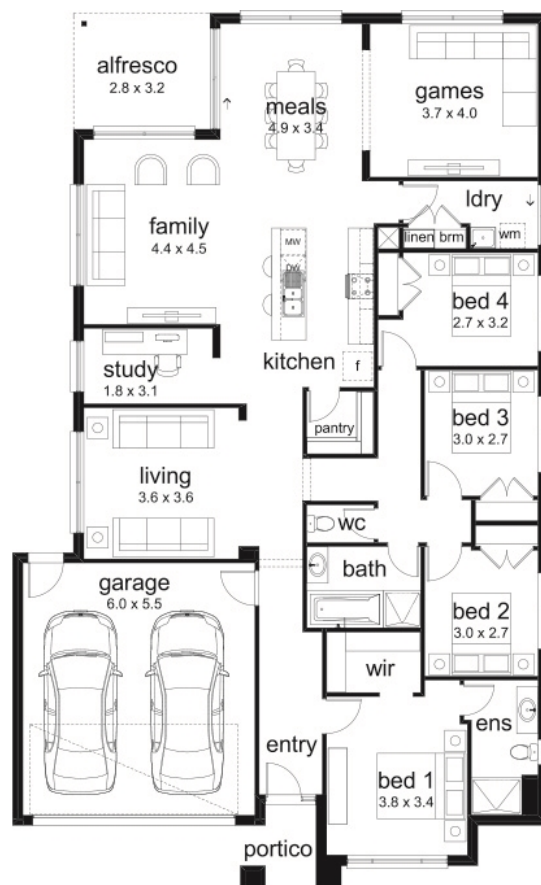
Lot 1015 Liberty Crescent
Corinella VIC 3984

 4
  2
  2
  3
  1
  1

Venetia 25 Livia Facade
(Aspirations)

Home size: 25.17sq Land size: 563m²

- ✓ Aspirations Inclusions
- ✓ Site Costs Allowance
- ✓ NBN Connection
- ✓ 2580mm Ceiling Height
- ✓ Double Garage
- ✓ Sectional Garage Door
- ✓ Remote control to garage door
- ✓ 900mm Appliances
- ✓ Ducted Heating
- ✓ Cooling
- ✓ Floor Coverings
- ✓ Current Promotion



Heritage Bay
CORINELLA – WESTERN PORT

Go to dennisfamily.com.au or call
1800 DENNIS for more information.

Alice Wang 0438 544 638
Reference HL0028671