



FIXED
PRICE
PACKAGE



HOME AND LAND

Images shown are for illustrative purposes only and may not represent the final product such as lighting, window furnishings, timber look garage door & timber windows. Façade details including entry door and window sizing may vary between house types. Pricing also excludes features such as fencing, landscaping, letterbox, decking, driveway and any notable features of the façade. Please speak with your sales consultant for further details.

LOT 113, FERN TREE RIDGE ESTATE, DROUIN (512M2)

FLOOR PLAN: LIVINGSTON 21_202
FACADE: MAWSON

FIXED PRICE

\$416,680

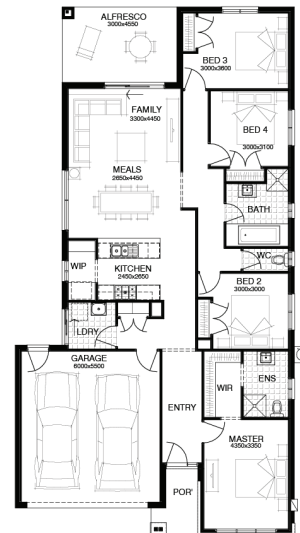
FIRST HOME OWNERS PRICE \$396,680

4 🚗 2 🍷 2 🚗 2 🚗 21sq 📏



PACKAGE INCLUSIONS:

- ▼ WELLNESS - DARWIN ESSENTIALS PACK
- ▼ DEVELOPER & COUNCIL REQS
- ▼ PART A & B TERMITE PROTECTION
- ▼ 3 COAT PAINT APPLICATION
- ▼ 450MM EAVES TO FACADE
- ▼ SECTIONAL LIFT GARAGE DOOR
- ▼ FLYSCREENS TO ALL OPENABLE WINDOWS & EXTERNAL SLIDING DOORS
- ▼ 900MM STAINLESS STEEL APPLIANCES
- ▼ TILED SHOWER BASES



For enquiries please contact:

Jamie Power
0413 697 799
Simonds.com.au

West Gippsland

VIC
jamie.power@simonds.com.au