

**SIMONDS
EXPRESS**



**FIXED
PRICE
PACKAGE**

HOME AND LAND

Images shown are for illustrative purposes only and may not represent the final product such as lighting, window furnishings, timber look garage door & timber windows. Façade details including entry door and window sizing may vary between house types. Pricing also excludes features such as fencing, landscaping, letterbox, decking, driveway and any notable features of the façade. Please speak with your sales consultant for further details.

LOT 4028, BRANDY CREEK ESTATE, WARRAGUL (555M2)

FLOOR PLAN: DRUMMOND 2212
FACADE: MASON

FIXED PRICE

\$396,479

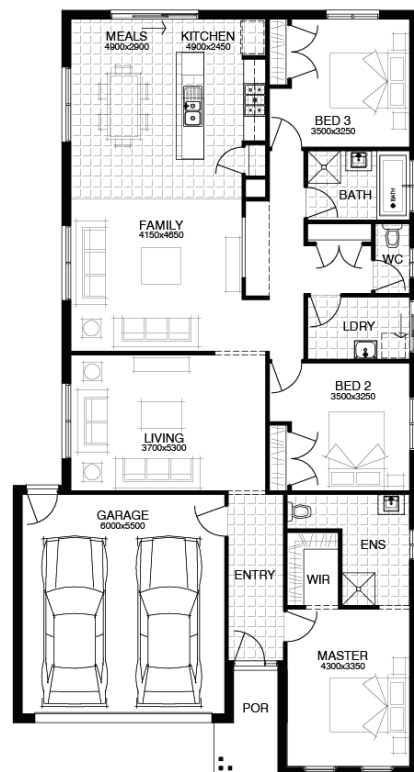
FIRST HOME OWNERS PRICE \$376,479

3 🚗 2 🍷 2 🚗 2 🚗 22sq 📏

WELLNESS LIVES HERE
You should too.

PACKAGE INCLUSIONS:

- ▶ DEVELOPER & COUNCIL REQS
- ▶ WELLNESS - DARWIN ESSENTIALS PACK
- ▶ UP TO 40M2 OF 100MM PLAIN CONCRETE PAVING
- ▶ 450MM EAVES TO FACADE
- ▶ SECTIONAL LIFT GARAGE DOOR WITH 2 REMOTES
- ▶ FLYSCREENS & LOCKS TO ALL OPENABLE WINDOWS
- ▶ FLOORING THROUGHOUT
- ▶ TECHNIKA 900MM STAINLESS STEEL APPLIANCES



For enquiries please contact:

Jamie Power
0413 697 799
Simonds.com.au

West Gippsland

VIC
jamie.power@simonds.com.au

All Fixed Price Home and Land packages are subject to Developer and Council approval and is based on Simonds standard floor plan with preferred siting (without alterations). Package Price does not include stamp duty, government, legal or bank charges. Community Infrastructure Levy and Asset Protection Permit are not included in pricing and is to be arranged by the client directly with the Developer (if applicable). Any alterations may incur additional charges. Confirm land price and availability prior to purchase. Simonds reserves the right to withdraw or amend pricing, inclusions and promotion at any time without notice. Please refer to the terms and conditions for the Lifetime Structural Guarantee at www.simonds.com.au/terms-and-conditions. This package applies to VIC Express range only. Please speak with your sales consultant for further details. Pricing is current at 19/09/2018.